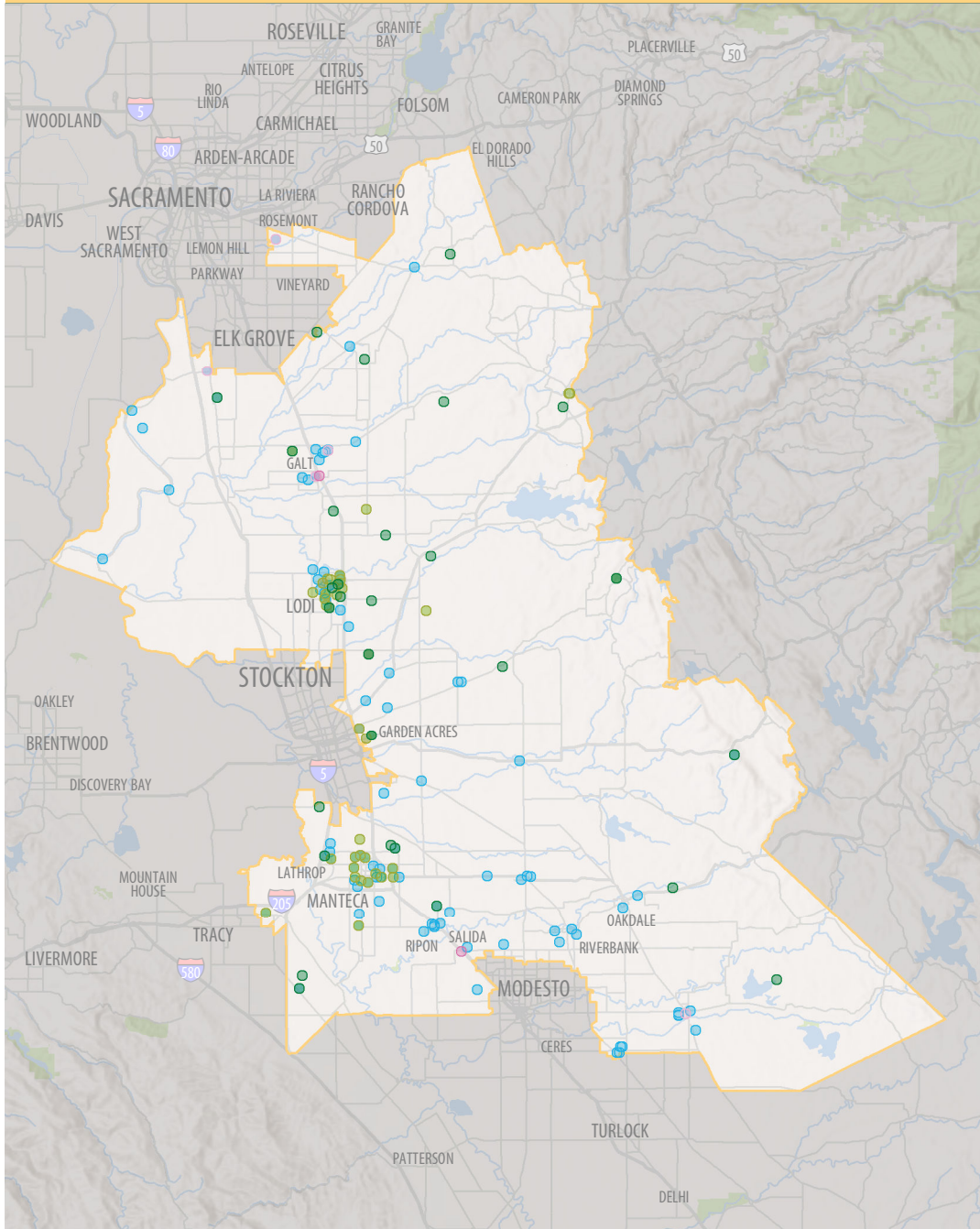
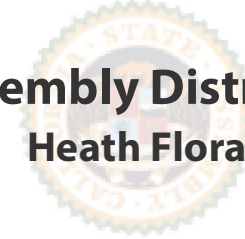


UNIVERSITY OF CALIFORNIA IN YOUR DISTRICT



Assembly District 9 Heath Flora



227 UC Community Programs in Your District

- Agriculture, Environment and Natural Resources - 45
- Health Services/Nutrition - 43
- K-12 Student Services - 11
- Community College Student Services - 2
- Teacher Professional Development - 124
- University Extension - 2

UNIVERSITY OF CALIFORNIA IN YOUR DISTRICT

	Assembly District 9	UC Davis	UC Systemwide
Undergraduate students, Fall 2022			
Applications (freshmen)	940	65,630	211,010
Applications (transfers)	220	13,550	40,690
Admits (freshmen)	660	21,380	125,230
Admits (transfers)	160	8,190	27,670
New enrollees (freshmen)	310	4,880	48,590
New enrollees (transfers)	110	2,530	19,560
<i>Note: for more detail, see: ucal.us/pipeline</i>			
First generation undergrads	720	11,240	86,270
Underrepresented undergrads	620	8,260	84,290
Undergrad student veterans	8	97	1,830
Undergrads entered as freshmen	1,090	19,610	180,800
Undergrads entered as transfers	230	6,290	49,610
Undergraduate student aid			
UC campus grant recipients	810	15,650	98,970
UC campus grant awards	\$5.3M	\$85.9M	\$644.2M
Cal Grant recipients	600	9,870	75,850
Cal Grant awards	\$5.7M	\$81.7M	\$676.2M
Pell Grant recipients	580	9,930	77,960
Pell Grant awards	\$2.2M	\$34.0M	\$291.4M
Federal loan recipients	410	6,790	50,510
Federal loan awards	\$1.6M	\$31.6M	\$204.1M
Employees			
Employees	1,320	42,380	296,060
Employees payroll	\$93.9M	\$2,691.5M	\$18,925.4M
Instructional employees	59	5,520	45,660
Research employees	29	3,990	28,610
Public service employees	670	22,090	160,430
Health services employees	560	10,780	61,360
Other counts			
Alumni - 2018	710	241,530	2.2M
Retirees - 2023	1,260	7,840	83,460
Startup companies - 2018	2	680	2,230
Tech licenses - 2018	---	56	590
Federal research awards by agency			
National Institutes of Health	---	\$282.1M	\$2,649.3M
National Science Foundation	---	\$59.0M	\$572.5M
Department of Defense	---	\$18.9M	\$304.9M
Department of Energy	---	\$13.1M	\$156.3M
NASA	---	\$5.9M	\$147.9M
Department of Agriculture	---	\$50.2M	\$90.5M
Other agencies	---	\$69.8M	\$502.3M

NOTE: Summary statistics current as of spring 2022