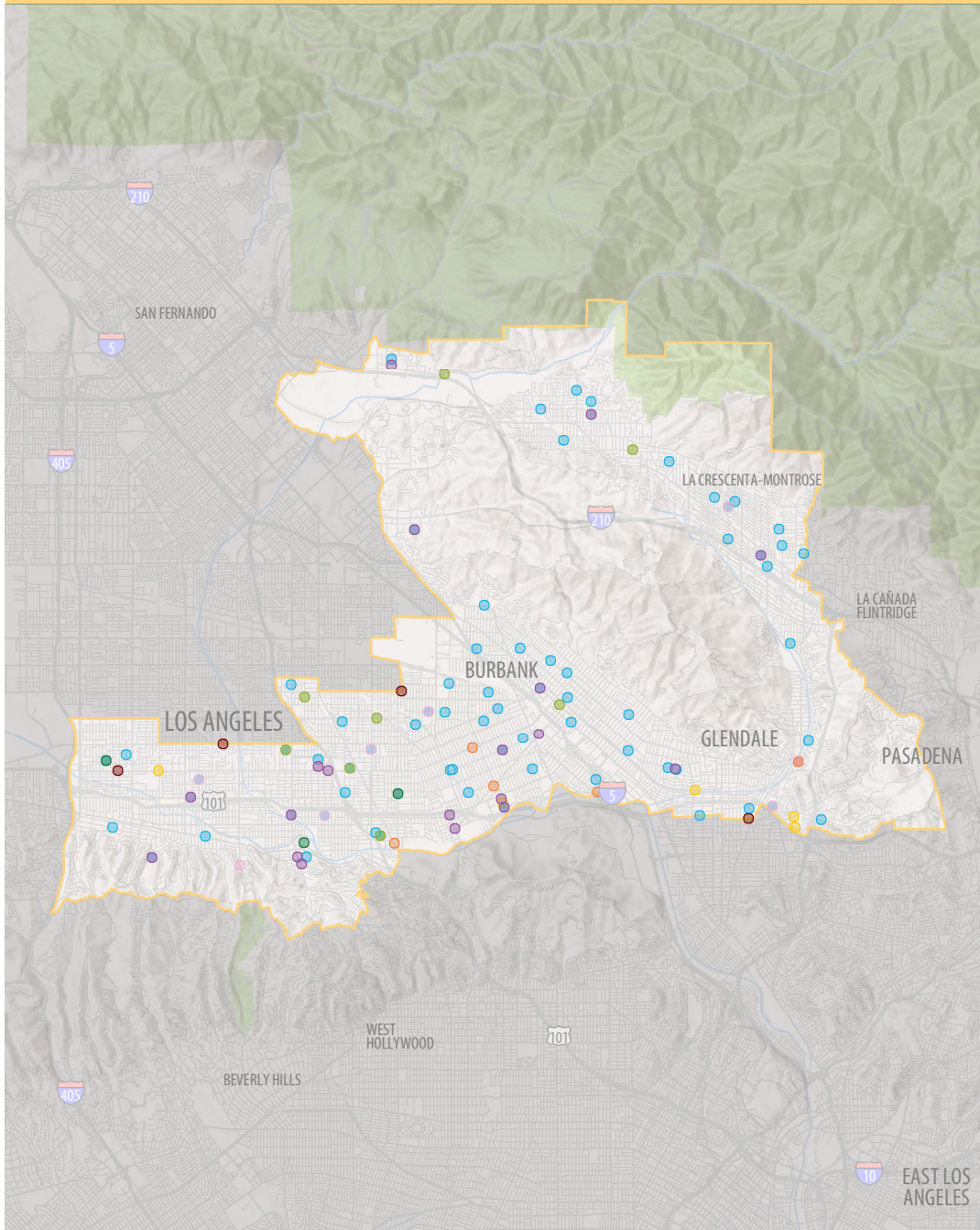
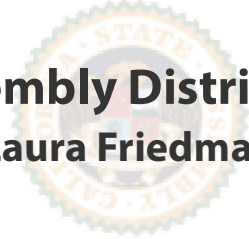


# UNIVERSITY OF CALIFORNIA IN YOUR DISTRICT



**Assembly District 44**  
**Laura Friedman**



## 139 UC Community Programs in Your District

- Agriculture, Environment and Natural Resources - 3
- Health Services/Nutrition - 8
- K-12 Student Services - 16
- Community College Student Services - 3
- Teacher Professional Development - 71
- University Extension - 10
- Community and Social Services - 5
- Cultural Resources and Arts - 19
- Public Policy - 4

# UNIVERSITY OF CALIFORNIA IN YOUR DISTRICT

	Assembly District 44	UC Santa Barbara	UC Systemwide
<b>Undergraduate students, Fall 2022</b>			
Applications (freshmen)	1,690	73,630	211,010
Applications (transfers)	750	15,380	40,690
Admits (freshmen)	990	19,700	125,230
Admits (transfers)	520	9,020	27,670
New enrollees (freshmen)	470	3,860	48,590
New enrollees (transfers)	360	1,910	19,560
<i>Note: for more detail, see: ucal.us/pipeline</i>			
First generation undergrads	850	7,240	86,270
Underrepresented undergrads	520	6,520	84,290
Undergrad student veterans	13	63	1,830
Undergrads entered as freshmen	1,710	14,490	180,800
Undergrads entered as transfers	830	4,530	49,610
<b>Undergraduate student aid</b>			
UC campus grant recipients	1,230	9,670	98,970
UC campus grant awards	\$8.1M	\$55.9M	\$644.2M
Cal Grant recipients	900	6,850	75,850
Cal Grant awards	\$8.0M	\$56.9M	\$676.2M
Pell Grant recipients	930	6,700	77,960
Pell Grant awards	\$3.4M	\$23.4M	\$291.4M
Federal loan recipients	710	3,730	50,510
Federal loan awards	\$3.0M	\$13.6M	\$204.1M
<b>Employees</b>			
Employees	3,030	13,710	296,060
Employees payroll	\$223.9M	\$534.9M	\$18,925.4M
Instructional employees	430	2,950	45,660
Research employees	140	1,600	28,610
Public service employees	1,670	8,980	160,430
Health services employees	790	180	61,360
<b>Other counts</b>			
Alumni - 2018	520	153,180	2.2M
Retirees - 2023	350	2,540	83,460
Startup companies - 2018	7	48	2,230
Tech licenses - 2018	5	34	590
<b>Federal research awards by agency</b>			
National Institutes of Health	---	\$18.0M	\$2,649.3M
National Science Foundation	---	\$55.7M	\$572.5M
Department of Defense	---	\$30.4M	\$304.9M
Department of Energy	---	\$14.6M	\$156.3M
NASA	---	\$5.7M	\$147.9M
Department of Agriculture	---	\$696,460	\$90.5M
Other agencies	---	\$12.0M	\$502.3M

NOTE: Summary statistics current as of spring 2022