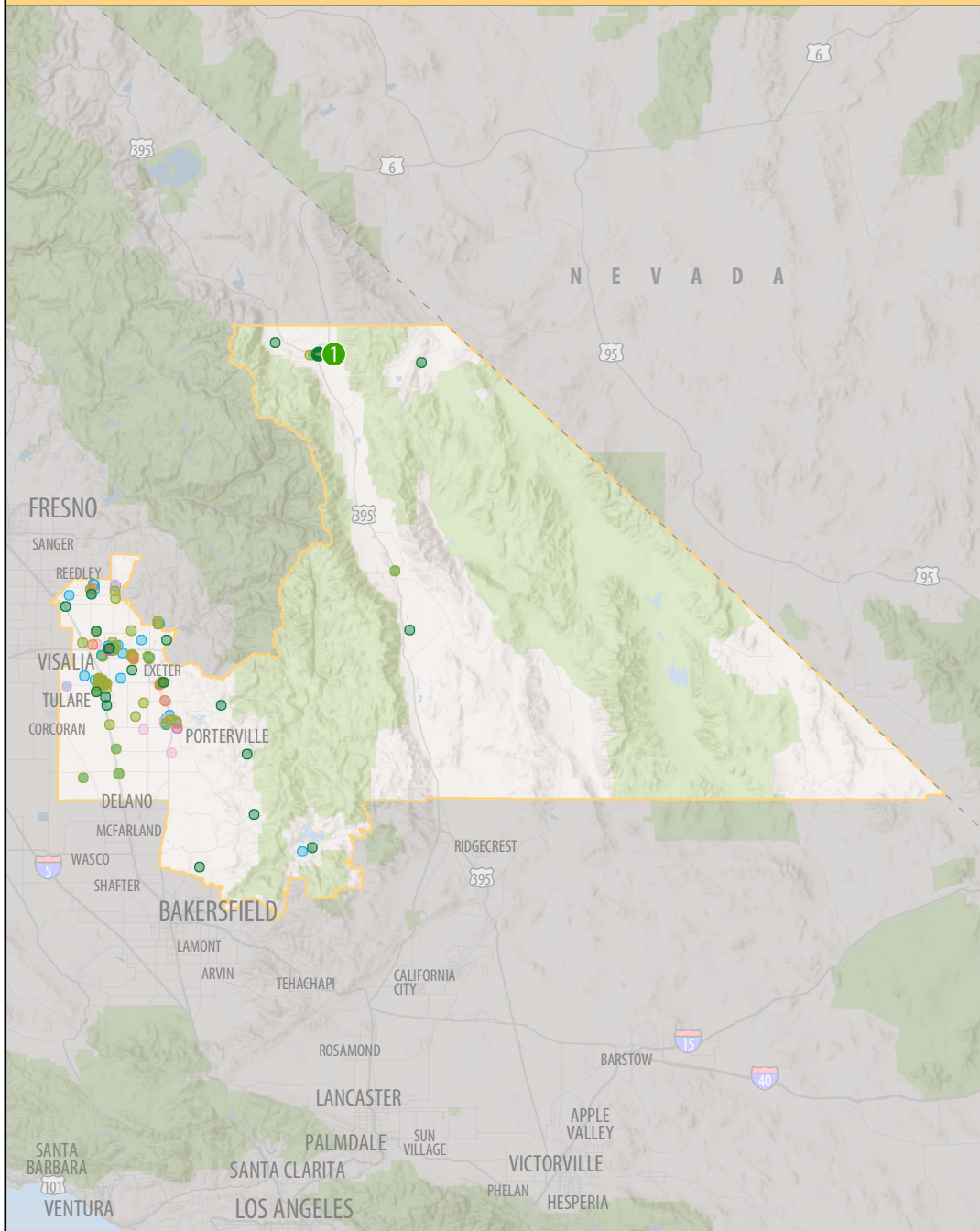
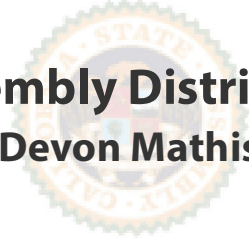


# UNIVERSITY OF CALIFORNIA IN YOUR DISTRICT



## Assembly District 26 Devon Mathis



### 205 UC Community Programs in Your District

- Agriculture, Environment and Natural Resources - 40
- Health Services/Nutrition - 78
- K-12 Student Services - 25
- Community College Student Services - 7
- Teacher Professional Development - 49
- Community and Social Services - 6

### 1 UC Natural Reserve in Your District

- ① White Mountain Research Center

# UNIVERSITY OF CALIFORNIA IN YOUR DISTRICT

	Assembly District 26	UC Merced	UC Systemwide
<b>Undergraduate students, Fall 2019</b>			
Applications (freshmen)	740	23,390	176,720
Applications (transfers)	150	3,590	41,270
Admits (freshmen)	480	17,220	107,670
Admits (transfers)	100	1,770	28,530
New enrollees (freshmen)	240	2,100	45,950
New enrollees (transfers)	69	170	21,050
<i>Note: for more detail, see: ucal.us/pipeline</i>			
First generation undergrads	710	6,030	90,980
Underrepresented undergrads	660	4,970	66,410
Undergrad student veterans	6	32	1,090
Undergrads entered as freshmen	920	7,610	177,000
Undergrads entered as transfers	160	500	49,130
<b>Undergraduate student aid</b>			
UC campus grant recipients	780	4,610	66,860
UC campus grant awards	\$6.0M	\$36.7M	\$279.8M
Cal Grant recipients	630	5,600	66,860
Cal Grant awards	\$7.9M	\$69.0M	\$294.3M
Pell Grant recipients	630	5,180	66,860
Pell Grant awards	\$3.4M	\$27.3M	\$122.9M
Federal loan recipients	950	8,850	285,260
Federal loan awards	\$2.2M	\$20.0M	\$621.2M
<b>Employees</b>			
Employees	350	3,770	234,680
Employees payroll	\$8.3M	\$144.1M	\$15,828.0M
Instructional employees	36	890	58,260
Research employees	57	330	36,300
Public service employees	56	92	6,880
Health services employees	67	---	98,180
<b>Other counts</b>			
Alumni	4,900	8,720	2.2M
Retirees	120	110	77,250
2018 startup companies	52	2	2,230
2018 tech licenses	---	---	590
<b>Federal research awards by agency</b>			
National Institutes of Health	---	\$6.5M	\$2,308.7M
National Science Foundation	---	\$9.5M	\$513.3M
Department of Defense	---	\$1.8M	\$340.1M
Department of Energy	---	\$2.0M	\$134.1M
NASA	---	\$1.2M	\$83.2M
Department of Agriculture	---	\$403,690	\$64.1M
Other agencies	---	\$5.9M	\$381.8M

NOTE: Summary statistics current as of spring 2020