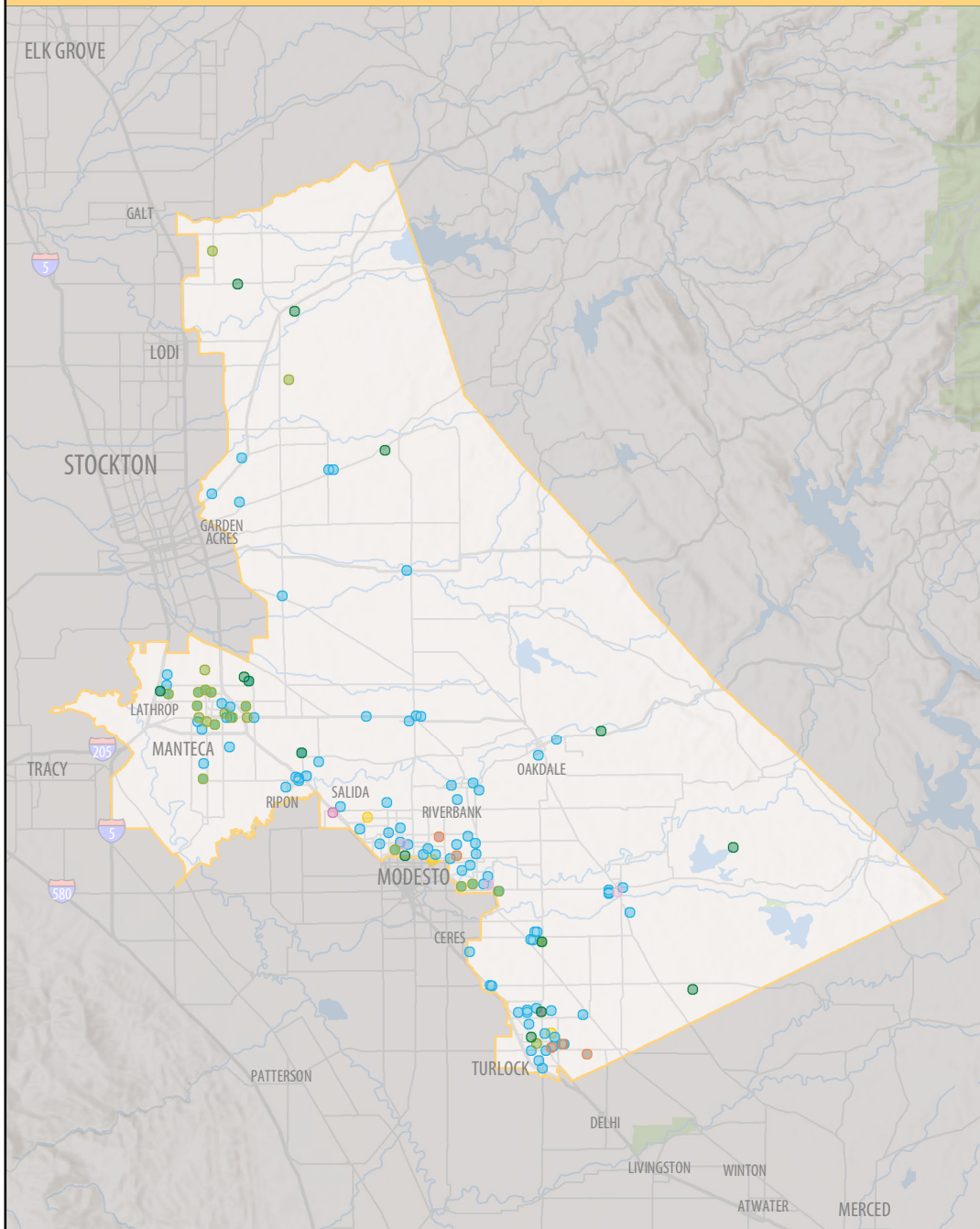
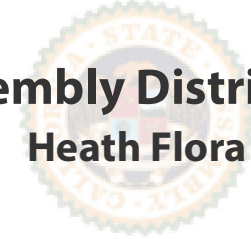


UNIVERSITY OF CALIFORNIA IN YOUR DISTRICT



Assembly District 12 Heath Flora



176 UC Community Programs in Your District

- Agriculture, Environment and Natural Resources - 21
- Health Services/Nutrition - 22
- K-12 Student Services - 4
- Community College Student Services - 2
- Teacher Professional Development - 113
- University Extension - 8
- Community and Social Services - 6

UNIVERSITY OF CALIFORNIA IN YOUR DISTRICT

	Assembly District 12	UC Merced	UC Systemwide
Undergraduate students, Fall 2019			
Applications (freshmen)	850	23,390	176,720
Applications (transfers)	190	3,590	41,270
Admits (freshmen)	600	17,220	107,670
Admits (transfers)	130	1,770	28,530
New enrollees (freshmen)	320	2,100	45,950
New enrollees (transfers)	91	170	21,050
<i>Note: for more detail, see: ucal.us/pipeline</i>			
First generation undergrads	840	6,030	90,980
Underrepresented undergrads	600	4,970	66,410
Undergrad student veterans	6	32	1,090
Undergrads entered as freshmen	1,250	7,610	177,000
Undergrads entered as transfers	220	500	49,130
Undergraduate student aid			
UC campus grant recipients	820	4,610	66,860
UC campus grant awards	\$6.5M	\$36.7M	\$279.8M
Cal Grant recipients	690	5,600	66,860
Cal Grant awards	\$8.7M	\$69.0M	\$294.3M
Pell Grant recipients	670	5,180	66,860
Pell Grant awards	\$3.3M	\$27.3M	\$122.9M
Federal loan recipients	1,270	8,850	285,260
Federal loan awards	\$2.9M	\$20.0M	\$621.2M
Employees			
Employees	650	3,770	234,680
Employees payroll	\$27.9M	\$144.1M	\$15,828.0M
Instructional employees	87	890	58,260
Research employees	57	330	36,300
Public service employees	49	92	6,880
Health services employees	140	---	98,180
Other counts			
Alumni	7,130	8,720	2.2M
Retirees	580	110	77,250
2018 startup companies	96	2	2,230
2018 tech licenses	---	---	590
Federal research awards by agency			
National Institutes of Health	---	\$6.5M	\$2,308.7M
National Science Foundation	---	\$9.5M	\$513.3M
Department of Defense	---	\$1.8M	\$340.1M
Department of Energy	---	\$2.0M	\$134.1M
NASA	---	\$1.2M	\$83.2M
Department of Agriculture	---	\$403,690	\$64.1M
Other agencies	---	\$5.9M	\$381.8M

NOTE: Summary statistics current as of spring 2020